

Straight to Teaching course overview



Contents

Useful contacts	3
Welcome	3
What is Straight to Teaching?	4
How is Straight to Teaching delivered?	4
How will you be supported?	6
Tes Institute pathway tutor	6
How will you be assessed?	7
What happens after your final assessment?	8
FAQs and helpful information	8
Meet the Tes Institute Straight to Teaching team	9
Meet the Tes Institute Straight to Teaching pathway tutors	9

Welcome

Welcome to Straight to Teaching. We're delighted that you've chosen Straight to Teaching to support your journey towards QTS. We're certain that you'll find this programme flexible enough to suit your particular circumstances and challenging enough to support every aspect of your teaching.

During the Straight to Teaching programme you'll have expert support from your pathway tutor, access to a comprehensive range of online CPD modules and in-school support from your mentor and senior leadership. Through this blended learning approach you'll be able to evidence your practice as an excellent classroom practitioner ready for the award of qualified teacher status (QTS) via our Assessment Only pathway.

If you have any questions, please do get in touch with the Tes Institute programme support team:

institutesupport@tes.com

I wish you the best of luck and look forward to supporting you.



Phillipa Bild

Head of Programme Delivery – Straight to Teaching

Useful contacts

Institute enquiries (for new enquiries) instituteenquiries@tes.com

Programme support (for existing applications or those enrolled on the programme) institutesupport@tes.com

Finance institutefinance@tes.com

Tes Learn queries institutesupport@tes.com

Meet the Tes Institute Straight to Teaching team on page 9

What is Straight to Teaching?

Straight to Teaching is a flexible in-school and online QTS preparation course. It allows you to continue working as a TA, higher level teaching assistant or unqualified teacher as you prepare for QTS assessment via our Assessment Only route.

The course is personalised to your needs and based on your current teaching experience. It will help you to work towards having two years of teaching experience in two schools, enabling you to develop your teaching without leaving your school and pupils.

How is Straight to Teaching delivered?

Our Straight to Teaching programme is delivered through a mix of in-school experience and online learning and theory, enabling you to develop your teaching and build evidence to demonstrate that you meet the English Teachers' Standards.

You'll have access to an extensive online library of subject-specific and pedagogy modules. Your pathway tutor will guide you to specific topics to close any gaps as your practice develops. You'll have full access to all modules for self study and to support research opportunities as you develop your reflective and analytical skills.



An overview of your Straight to Teaching programme with instructions, advice and guidance at each stage of your journey

	Welcome	Induction	On programme	Your assessment
Tasks	<p>Read welcome email</p> <p>Register to attend welcome webinar</p> <p>Reply to your tutor email</p>	<p>Register for Tes Learn</p> <p>Register for the assessment portal and upload documents</p> <p>Complete induction tasks</p> <p>Pathway tutor KIT meeting</p>	<p>Fortnightly:</p> <ul style="list-style-type: none"> • Observation • Mentor meeting • Expert colleagues • Reflective diary <p>Online CPD sessions</p> <p>Pathway tutor interim meetings and visits</p>	<p>8 x TS justifications</p> <p>All compliance complete</p> <p>Finance check</p> <p>PEAV visit – observation (see guidance)</p> <p>Final assessment visit – observation (see guidance)</p> <p>Moderation</p>
Resources On the course you will receive or gain access to...	<p>Welcome email</p> <p>Introductory email from your pathway tutor</p>	<p>Induction One Stop Shop (OSS)</p> <p>Tes Learn and assessment portal guidance videos</p>	<p>Learner One Stop Shop</p> <p>Tes Learn CPD sessions</p> <p>Learner and mentor drop in sessions</p> <p>Pathway tutor expertise</p>	<p>Final term checklist</p> <p>Justification guidance and tutorial</p> <p>Compliance guide</p> <p>Pathway tutor support</p>
Trouble shooting	<p>Need support?</p> <p>Email institutesupport@tes.com</p>			<p>For more information</p> <p>Head of Programme Delivery – Phillipa Bild</p> <p>Phillipa.Bild@tes.com</p>

How will you be supported?

Tes Institute pathway tutor

You'll be allocated a Tes Institute pathway tutor who will support you as you complete your self study Tes Learn sessions. Your pathway tutor will also read your fortnightly reflective diary, lesson observation, expert colleague observation and mentor meeting notes giving feedback and supportive next steps. Your pathway tutor is your first source of support if you have a question or need any help.

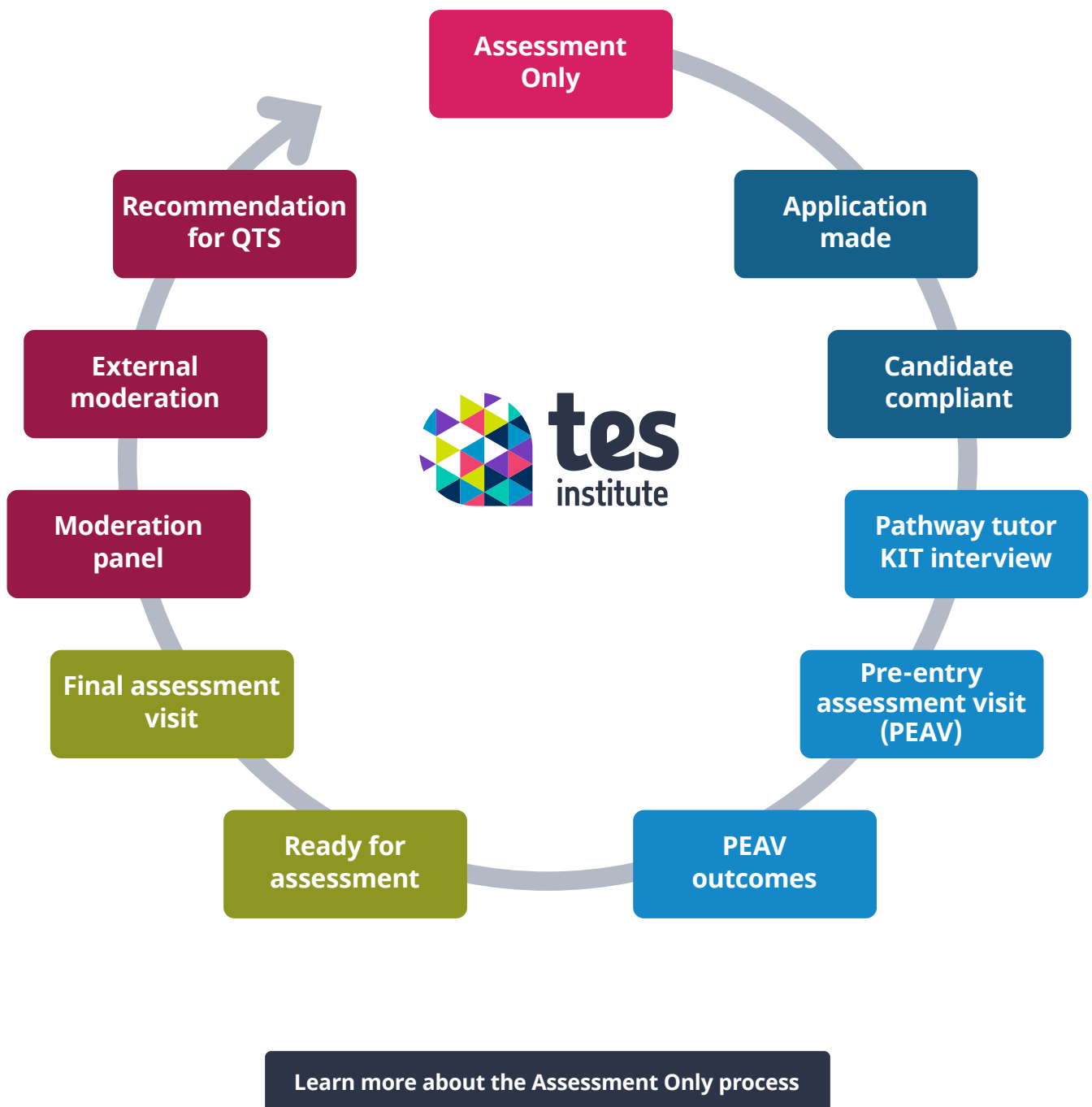
School-appointed mentor

When your school agrees to support you on the Straight to Teaching programme they are asked to appoint a mentor who will help you to decide actions and goals to meet the Teachers' Standards and gather the evidence you need to move onto the Assessment Only pathway. Your mentor doesn't need to undertake the compulsory mentor training set out for ITT however they will have materials and modules available to support them. Your pathway tutor will also be available to your mentor.



How will you be assessed?

At the end of your Straight to Teaching programme you'll move on to the Assessment Only pathway. This diagram shows the Assessment Only process which you'll join at the PEAV (pre-entry assessment visit) point:



What happens after your final assessment?

After your final assessment visit, if all has gone well, you'll be included in the next moderation panel that happens on the last Wednesday of every month. If approved, you'll then receive an email from Tes Institute with instructions on how to download your certificate from the DfE website.

FAQs and helpful information

How much teaching do I need when on the Straight to Teaching programme?

We ask all learners to have access to a 50% to 80% weekly whole class teaching timetable for the duration of the course.

What should I be teaching?

If you're in a primary or early years setting, you should teach different subjects within the curriculum as far as you're able to in your school, including literacy, numeracy and science. Again, what teachers deliver varies in different settings, but we'd expect you to try and reflect what teachers teach in your school as their regular way of working.

For secondary, you should be teaching in the subject area you applied for.

I'm secondary and I teach more than one subject – can I use both?

You can continue to teach all your subjects, but you must be meeting the 50% to 80% requirement in your focus subject.

Do I have to do a second school experience (SSE)?

For QTS the DfE requires evidence of significant teaching experience across two schools over two academic years. If you have prior experience of whole class teaching (rather than groups), this could count as your SSE. Please speak to your pathway tutor or the head of programme delivery as soon as possible.

How is my programme length calculated?

For QTS you must have a minimum of six academic terms of teaching experience where you have had responsibility for the planning, delivery and formative assessment of the subject(s) being taught. On application you will submit a Confirmation of School Support Form (CSSF) which outlines your teaching terms and hours in your current employment. You will also submit testimonials from any other relevant employment. The head of programme delivery then reviews this information and calculates the length of programme needed. This will be based on a 50% or more teaching timetable. If you've been teaching less than 50% the terms given will be adjusted accordingly.

Meet the Tes Institute Straight to Teaching team



Phillipa Bild

Head of Programme Delivery

“I joined Tes Institute after a 20-year career in primary education, most recently as a head of school. I’m passionate about professional development and made it a priority for all my teachers and support staff, especially in the wake of the global pandemic. After joining Tes Institute as a pathway tutor in 2022 I’m delighted to be part of our mission to drive up standards in teaching as the Head of Programme Delivery for Straight to Teaching and the Tes Institute Safeguarding Lead.”

Meet the Tes Institute Straight to Teaching pathway tutors



Catherine Axe

“I’m an Education Consultant at Tes, and bring over a decade of experience to my role. I’ve been involved in various programmes such as iPGCE, Straight to Teaching and Assessment Only.

My teaching background lies primarily in secondary education, specialising in religious education (RE), humanities and citizenship. I’ve had a leadership role overseeing both RE and citizenship. Prior to my teaching career, I worked in television as a production manager. I hold a Bachelor’s degree in Philosophy and Religion, along with a PGCE and a Master’s degree. I love working across all the Tes courses and hearing different opinions about pedagogy and educational theories.”



Barbara Hockey

“I worked in France for three years, teaching English in French schools and universities and then spent three years lecturing in French at a British university. Having done my PGCE and switched into school teaching, I taught largely upper secondary, teaching French, music, sociology and eventually psychology to A-level. I was also on the leadership team as timetabler and professional tutor, dealing with trainee and newly qualified teachers.

I’ve been a Tes Pathway Tutor since 2016 and consider it pretty much my dream job. Through teaching, I just love finding out about other cultures and helping people to develop their teaching skills.”



Richard Lawton

“I returned to the UK in 2021 after spending 10 years teaching secondary maths in Dubai, UAE. I specialise in mathematics but have also served as head of sixth form, providing guidance and support to students during a critical phase of their academic development. While in the UAE I completed a NPQSL and was granted FCCT status.

As a Tes Pathway Tutor, I’ve enjoyed nurturing teachers, guiding them on their journey to becoming exceptional educators. Witnessing the transformative development of these teachers, as they gain pertinent knowledge, brings me immense joy. I take pride in offering guidance, resources and mentorship to help them excel in their teaching careers and make a positive impact on their students’ lives. Supporting the growth and success of fellow educators is a rewarding aspect of my role, fueling my enthusiasm for this wonderful profession.”



Cassie Lockwood

“I’ve taught from EY1 to Year 6. My current role is Head of Student Welfare for students from EY1-Y13, I’m also a DSL. Prior to this I’ve been head of year (Year 3, Year 4), head of phase (lower KS2) and subject lead in PSHE.

I’ve been a Tes Pathway Tutor since 2020. I enjoy supporting students around the world, seeing how they adapt to the changes in education, and the new and innovative ideas they bring to education. I particularly like the VEO sessions as I get to see my students in action, and sharing my experiences in education to help them get the most out of their training is very rewarding.”



Becki Schofield

“I started my career in education working as a primary teacher, both in the UK and overseas. After having my children, I returned to work as an advisory teacher for the Learning Improvement Service and as a tutor on the PGCE at the University of Cumbria. Alongside my work for Tes Institute, I work part-time for the Open University as an Associate Lecturer and teach English to asylum seekers in Carlisle. I have an MA in Education and am a fellow of the Higher Education Academy.

I’ve worked as a Tes Pathway Tutor across a number of different programmes since 2015. I really enjoy engaging in professional discussions and learning from teachers, and aspiring teachers, from across the globe.”



Baasit Siddiqui

“I’ve been working in education for 10 years. I taught 11-19 business, ICT and computer science, becoming a head of faculty in business and computer science. Since 2018 I’ve worked as an education consultant delivering workshops and CPD sessions with various schools, colleges, universities and education providers.

I’ve worked for Tes Institute as a pathway tutor and assessor supporting multiple learners in gaining qualified teacher status (QTS) through Straight to Teaching, Assessment Only and the Postgraduate Teaching Apprenticeship.

My favourite part about being a pathway tutor is guiding passionate educators in developing their skills and knowledge around effective teaching theories and reflecting upon them in a real-life impactful manner.”



Chris Whitehead

“I have a varied background within the education sector, initially within a primary setting as teacher, inclusion manager and executive headteacher, and subsequently running my own teacher training partnership and supporting the DfE’s recruitment of overseas teachers. I currently work with schools in the UK and across the world supporting headteachers and senior leaders to maximise leadership potential and improve outcomes for pupils. I also work with the DfE as an inclusion expert and assess new-to-role SENCOs against the National Senco Award criteria.

I’ve been a Tes Pathway Tutor since 2017 and it’s a great privilege to visit and work with so many talented and committed educational professionals in different school settings. Getting to know the learners and understand the journey they’re on so I can best support them, is always a huge source of job satisfaction. I’ve learned so much about the education landscape and the potential of the profession to be a positive and impactful force for good.”

Supporting teachers and schools since 1910



Contact us for further information and advice
tes.com/institute
020 3194 3200

Questions about Straight to Teaching? instituteenquiries@tes.com